

+ Nguyen Thi Thanh Van, Samsung

+ 28th May 2024

HbbTV Test Suite 2.0.4 Insights

Behind the test cases

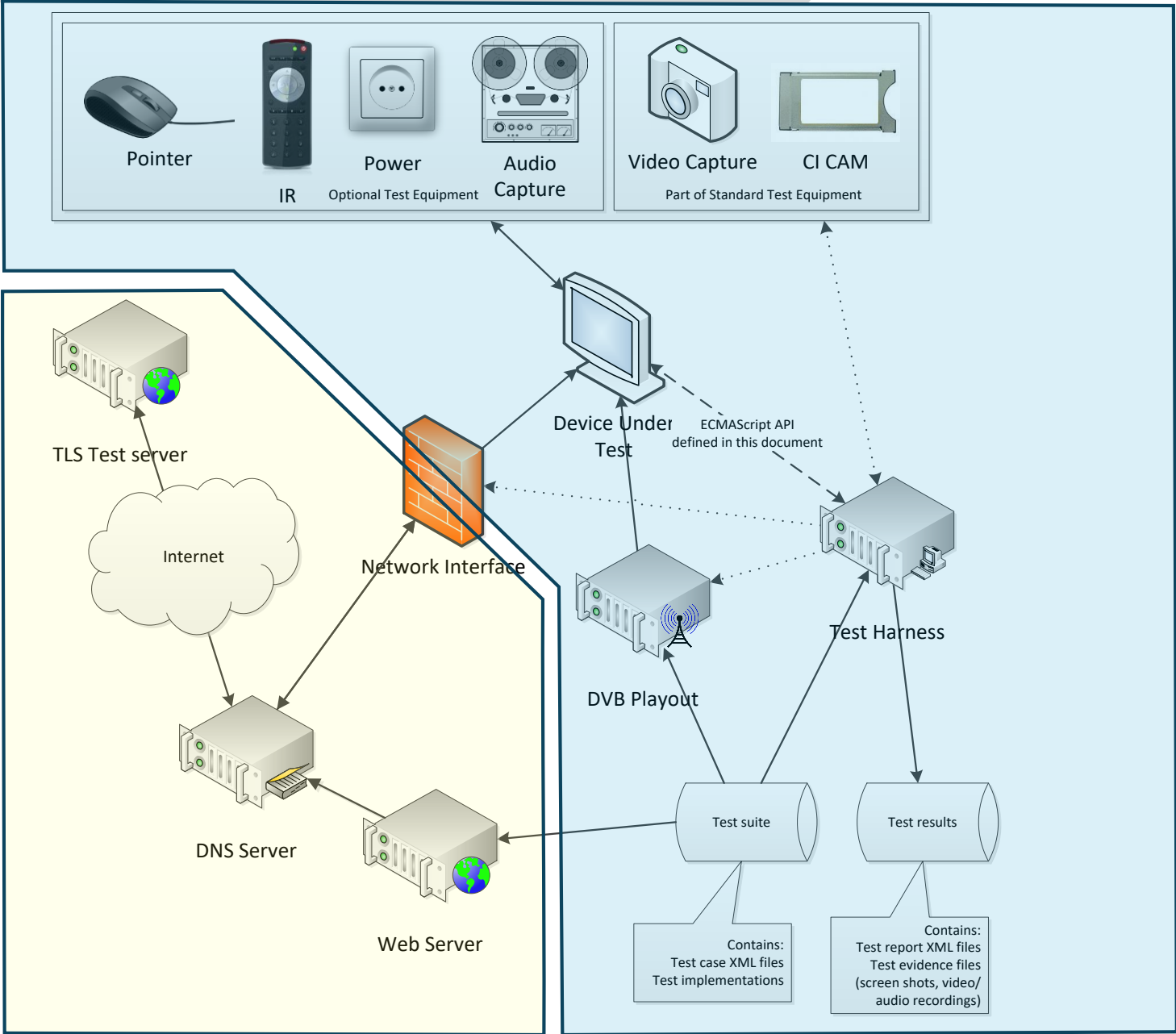
Samsung Research

Test system

Test suite usage and license

Test development & maintenance process

HbbTV example test system



User environment

HbbTV

Test suite usage

- HbbTV implementation development
- Device conformance certification

Test suite license

- Anyone through HbbTV Registered Test Centers.

<https://www.hbbtv.org/resource-library/#testing-information-and-support>

- HbbTV members for use in their own facility.
- Early access is granted only to test suite contributors.

HbbTV life cycle examples*

Requirements

Requirements capture on basis of set of criteria and categorised:

1. Ext. Tech.
2. New features
3. Deprecation
4. Ind. Specs. into Core Spec.
5. Errata

T-24 months

Test Assertions

Availability depending on the complexity of additional spec features

T-12 months

Test Suite

A test suite is a prerequisite for product on the market. HbbTV currently commissions Test Suites at considerable cost from external suppliers.

T-6 months

HbbTV continues aim of reference external tech. where possible. This tech. may be updates according to regular cycles.

Draft Specification

T-18 months

HbbTV gates it Spec publication on the availability of the specification and an associated Test Assertions

Spec. Publication

T-12 months

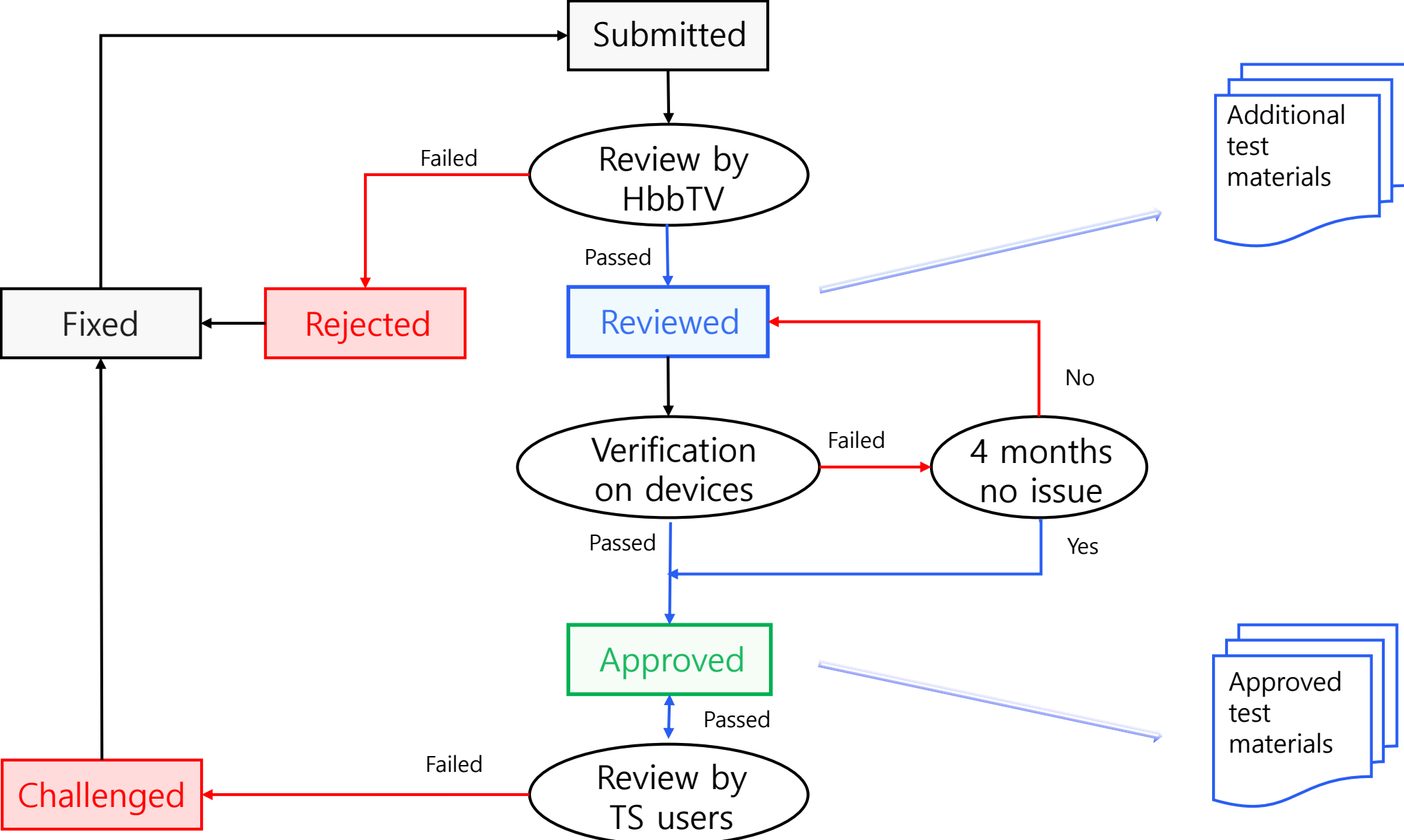
HbbTV's process ends with deployment of product based on its specification

T

Deployment

* This timeline is indicative

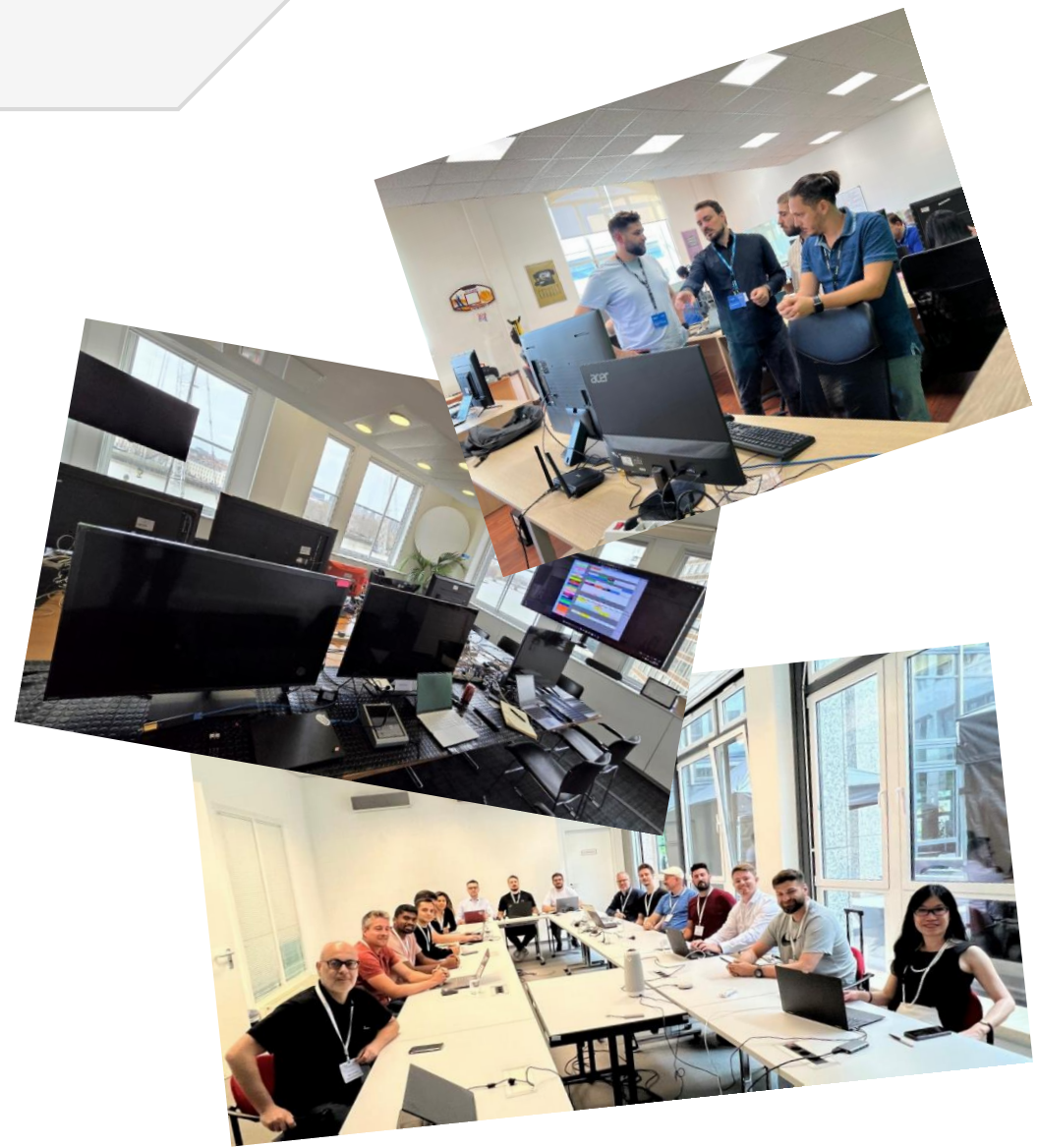
HbbTV test maintenance process



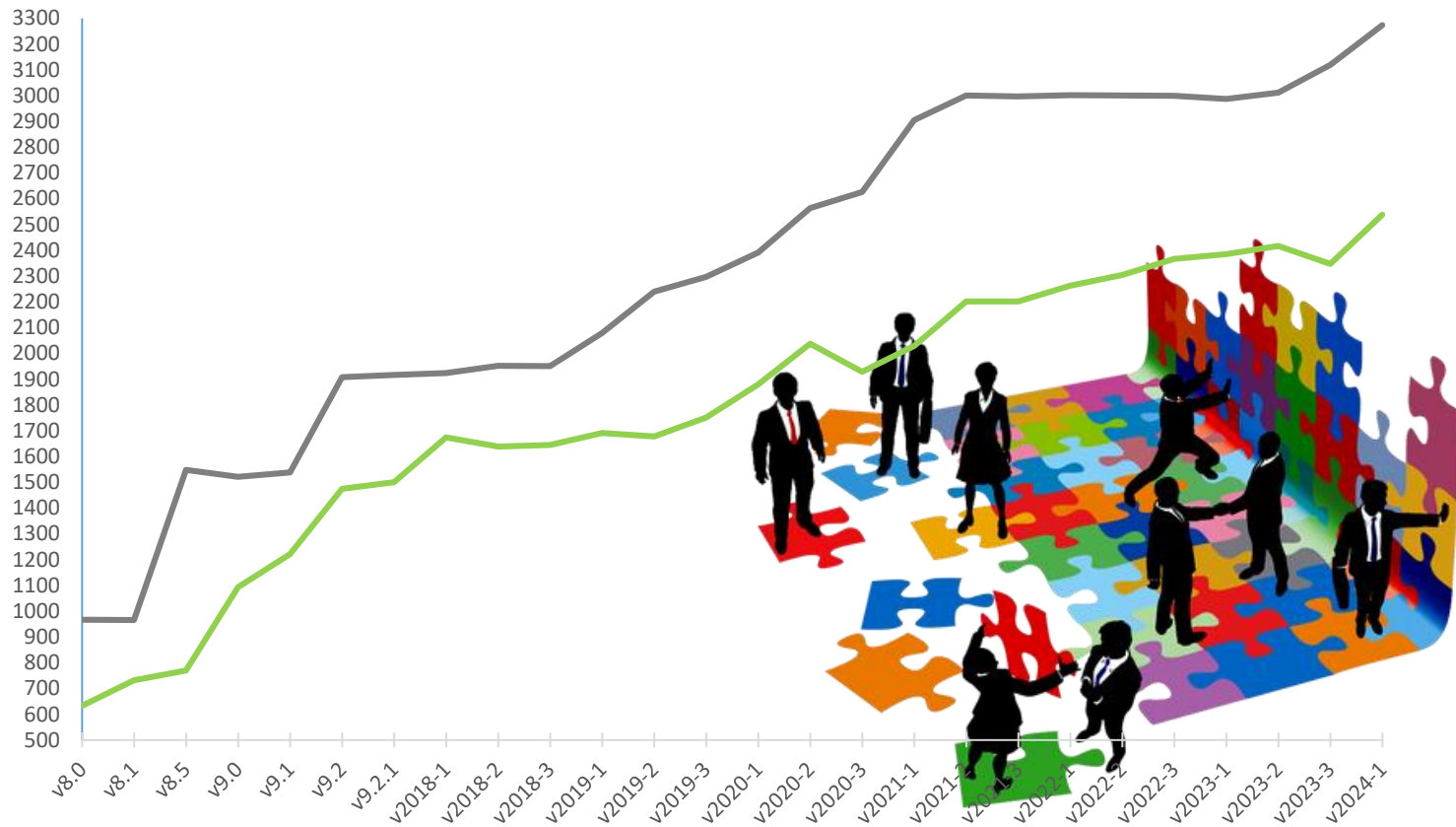
HbbTV testing event

- Testing events are organized before every Test Suite release.
- Test verification on multiple devices. Some equipped with newest implementation, not yet publicly available.
- F2F discussion between test providers and HbbTV implementers
- Direct support from test and harness providers.

Package	Test ID	Status	Title	Optional Feature	est Res	est Res	est Res	est Res	est Res	est Res
org.hbbtv_00000060		Challenged To Approve	Test for KILLED application after service selection		Passed	Passed	Passed	Passed	Passed	Passed
org.hbbtv_00000070		Challenged To Approve	Test for NOT SIGNALLED application after service		Passed	Passed	Passed	Passed	Passed	Passed
org.hbbtv_00000730		Challenged To Approve	User input - VK_5		Passed	Failed	Passed	Passed	Passed	Failed
org.hbbtv_00000740		Challenged To Approve	User input - VK_6		Passed	Failed	Passed	Passed	Passed	Failed
org.hbbtv_00000750		Challenged To Approve	User input - VK_7		Passed	Failed	Passed	Passed	Passed	Failed
org.hbbtv_00000760		Challenged To Approve	User input - VK_8		Passed	Failed	Passed	Passed	Passed	Failed
org.hbbtv_00000770		Challenged To Approve	User input - VK_9		Passed	Failed	Passed	Passed	Passed	Failed
org.hbbtv_00000780		Challenged To Approve	User input - VK_STOP		Passed	Failed	Passed	Passed	Passed	Failed
org.hbbtv_00000790		Challenged To Approve	User input - VK_PLAY	+VK_PLAY	Passed	Failed	Passed	Passed	Passed	Failed
org.hbbtv_00000800		Challenged To Approve	User input - VK_PAUSE	+VK_PAUSE	Passed	Failed	Passed	Passed	Passed	Failed
org.hbbtv_00000810		Challenged To Approve	User input - VK_PLAY_PAUSE	+VK_PLAY_PAUSE	Passed	Passed	Passed	Passed	Passed	Failed
org.hbbtv_00000820		Challenged To Approve	User input - VK_FAST_FWD		Passed	Failed	Passed	Passed	Passed	Failed
org.hbbtv_000003710		Challenged To Approve	the application.privateData.currentChannel after		Passed	Passed	Passed	Passed	Passed	Passed
org.hbbtv_00003760		Challenged To Approve	video.currentChannel after channel selection by		Passed	Passed	Passed	Passed	Passed	Passed
org.hbbtv_00003780		Challenged To Approve	video.currentChannel after application start		Passed	Passed	Passed	Passed	Passed	Passed
org.hbbtv_00003790		Challenged To Approve	EIT p/f		Passed	Passed	Passed	Passed	Passed	Passed
org.hbbtv_00003950		Challenged To Approve	Playback of video without content-range support		Passed	Passed	Passed	Passed	Passed	Passed
org.hbbtv_00004000		Challenged To Approve	video/broadcast keeps aspect ratio		Passed	Passed	Passed	Passed	Passed	Passed
org.hbbtv_A11YAD0030		Preview To Approve	Verifying the Audio Description Preference Change		Passed	Passed	Passed	Passed	Passed	Passed
org.hbbtv_A11YAD0040		Preview To Approve	Verifying the Audio Description Preference Change		Passed	Passed	Passed	Passed	Passed	Passed
org.hbbtv_A11YAD0050		Preview To Approve	Verifying the Audio Description Preference Change		Passed	Passed	Passed	Passed	Passed	Passed
org.hbbtv_A11YAD0060		Preview To Approve	Verifying the Audio Description Preference Change		Passed	Passed	Passed	Passed	Passed	Passed
org.hbbtv_A11YDE0010		Preview To Approve	DE - negotiateMethods response message reflects		Failed	Passed	Passed	Passed	Passed	Unable to
org.hbbtv_A11YDE0011		Preview To Approve	DE - negotiateMethods response message reflects	-AC4_DE_OVERRIDE-M	Failed	Passed	Passed	Passed	Passed	Unable to
org.hbbtv_A11YHCU1_0010		Preview To Approve	Accessibility - High Contrast UI Settings Query	+HIGH_CONTRAST_UI	Passed	Passed	Passed	Passed	Passed	Passed
org.hbbtv_A11YHCU1_0020		Preview To Approve	Accessibility - High Contrast UI Settings Query	+HIGH_CONTRAST_UI	Passed	Passed	Passed	Passed	Passed	Passed
org.hbbtv_A11YIVSL_0010		Preview To Approve	Accessibility - In-Vision Sign Language Settings	+IN_VISION_SIGN_LAI	Passed	Passed	Passed	Passed	Passed	Passed
org.hbbtv_A11YIVSL_0020		Preview To Approve	Accessibility - In-Vision Sign Language Settings	+IN_VISION_SIGN_LAI	Passed	Passed	Passed	Passed	Passed	Passed
org.hbbtv_A11YMAG_0010		Preview To Approve	Accessibility - Magnification Settings Query	+MAGNIFICATION_UI	Passed	Passed	Passed	Passed	Passed	Passed
org.hbbtv_A11YMAG_0020		Preview To Approve	Accessibility - Magnification Settings Query	+MAGNIFICATION_UI	Passed	Passed	Passed	Passed	Passed	Passed
org.hbbtv_A11YRESP2U_0010		Preview To Approve	Accessibility - Response to User Action feature:	+RESP_TO_USER_ACTI	Passed	Passed	Passed	Passed	Passed	Passed
org.hbbtv_A11YRESP2U_0020		Preview To Approve	Accessibility - Response to User Action feature:	+RESP_TO_USER_ACTI	Passed	Passed	Passed	Passed	Passed	Passed
org.hbbtv_A11YRESP2U_0050		Preview To Approve	Accessibility - Response to a User Action Behaviour	+RESP_TO_USER_ACTI	Passed	Passed	Passed	Passed	Passed	Passed
org.hbbtv_A11YSCRE_0010		Preview To Approve	Accessibility - Screen Reader Settings Query	+SCREADER	Passed	Passed	Passed	Passed	Passed	Passed
org.hbbtv_A11YSCRE_0020		Preview To Approve	Accessibility - Screen Reader Settings Query	+SCREADER	Passed	Passed	Passed	Passed	Passed	Passed
org.hbbtv_A11YSUBS_0010		Preview To Approve	Accessibility - Subtitles Settings Query (disabled)	+SUBTITLE_SUB_SETTI	Passed	Passed	Passed	Passed	Passed	Passed
org.hbbtv_A11YSUBS_0030		Preview To Approve	Accessibility - Subtitles Settings Query (enabled -	+SUBTITLE_SUB_SETTI	Passed	Passed	Passed	Passed	Passed	Passed
org.hbbtv_A11Y_0020		Preview To Approve	Accessibility Framework Feature Query		Passed	Passed	Passed	Passed	Passed	Passed
org.hbbtv_A11Y_0030		Preview To Approve	Accessibility Settings Change Notifications		Passed	Passed	Passed	Passed	Passed	Passed
org.hbbtv_A11Y_0040		Preview To Approve	Accessibility Feature Suppression		Passed	Passed	Passed	Passed	Passed	Passed



Next testing event: <https://www.hbbtv.org/event/kineton-international-plugfest-2024/>



Join the Testing Group and build the testing strategy together!

Thank you!
van.nguyen@samsung.com