



CALENDAR

SUN	MON	TUE	WED	THU	FRI	SAT
	1	2	3	4	5	6
7	8	9	10	11	12	13
14	15	16	17	18	19	20
21	22	23	24	25	26	27
28	29	30				

Rapid application  
development  
through frameworks  
and templates



#### Introduction

At Kineton we operate in the Media, Mobile, Web and Car Infotainment markets by offering the following competences:

- Enterprise systems
- Mobile solutions
- AR / VR / MR solutions
- Multimedia solutions on embedded systems



**Kineton**



# Our Approach



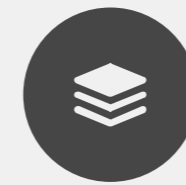


From scratch



01 It is not ideal, especially if the problem is from a well-known domain.

Library



02 A collection of objects and functions, which can be reused and shared among multiple applications. A library performs specific, well-defined operations.

Framework



03 A universal, reusable software environment that provides particular functionality as part of a larger software platform.



# We use or design and develop frameworks

Three tier architecture

- Presentation
- Logic
- Infrastructure

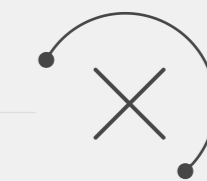
## Application life-cycle

Starting



Running

Closing





# Application development approach

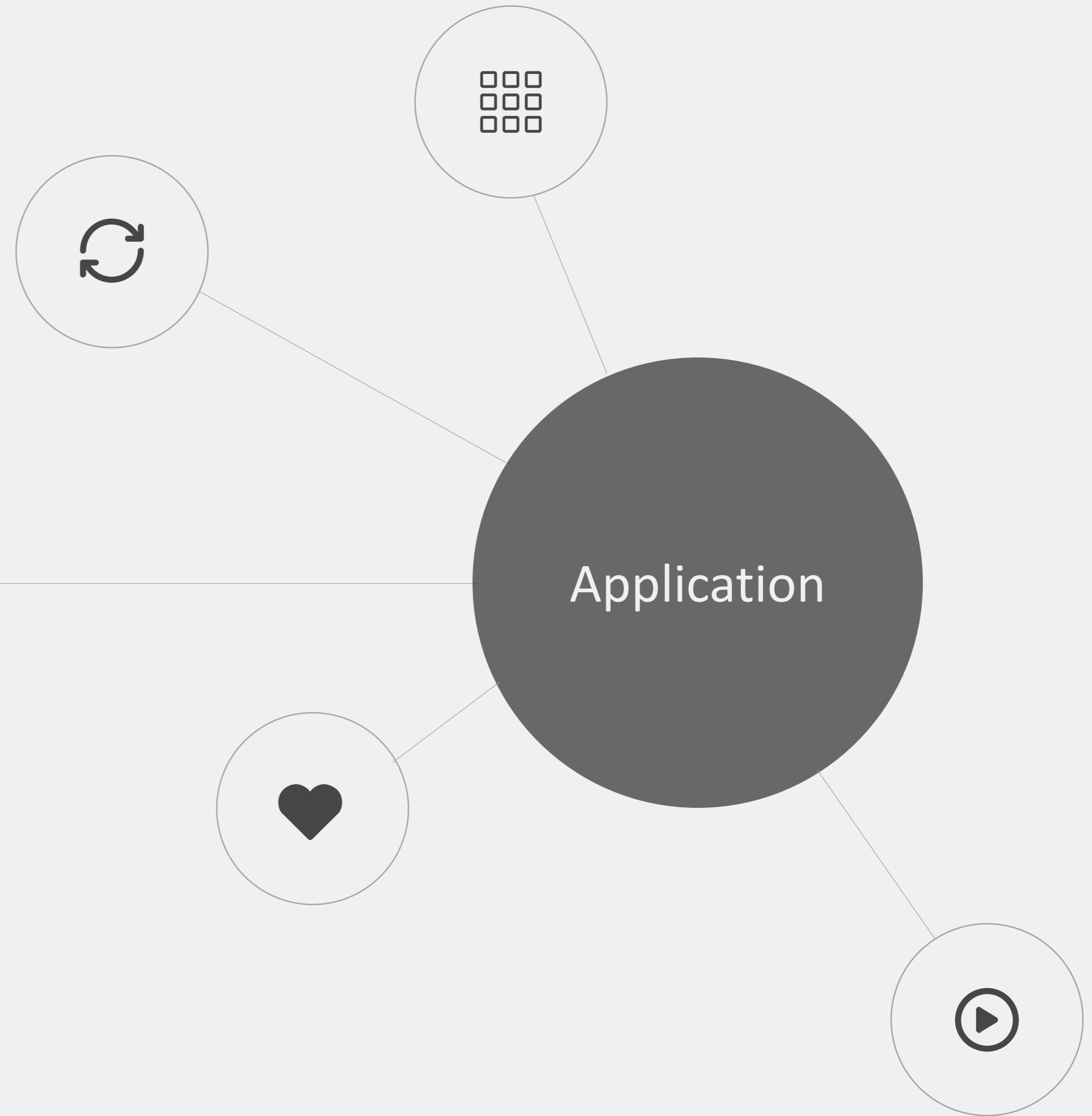
Screens

Navigation

Events

BE communication

Drawing





### TIME SAVINGS

Same reason why you use variables and functions/classes. You try your very best to not have to repeat yourself.



### NON-MODIFIABLE CODE

The framework code is not supposed to be modified, users can extend the framework, but they should not modify its code.



### INVERSION OF CONTROL

The overall program's flow of control is dictated by the framework and not the caller. This is the opposite of how libraries work.



### EXTENSIBILITY

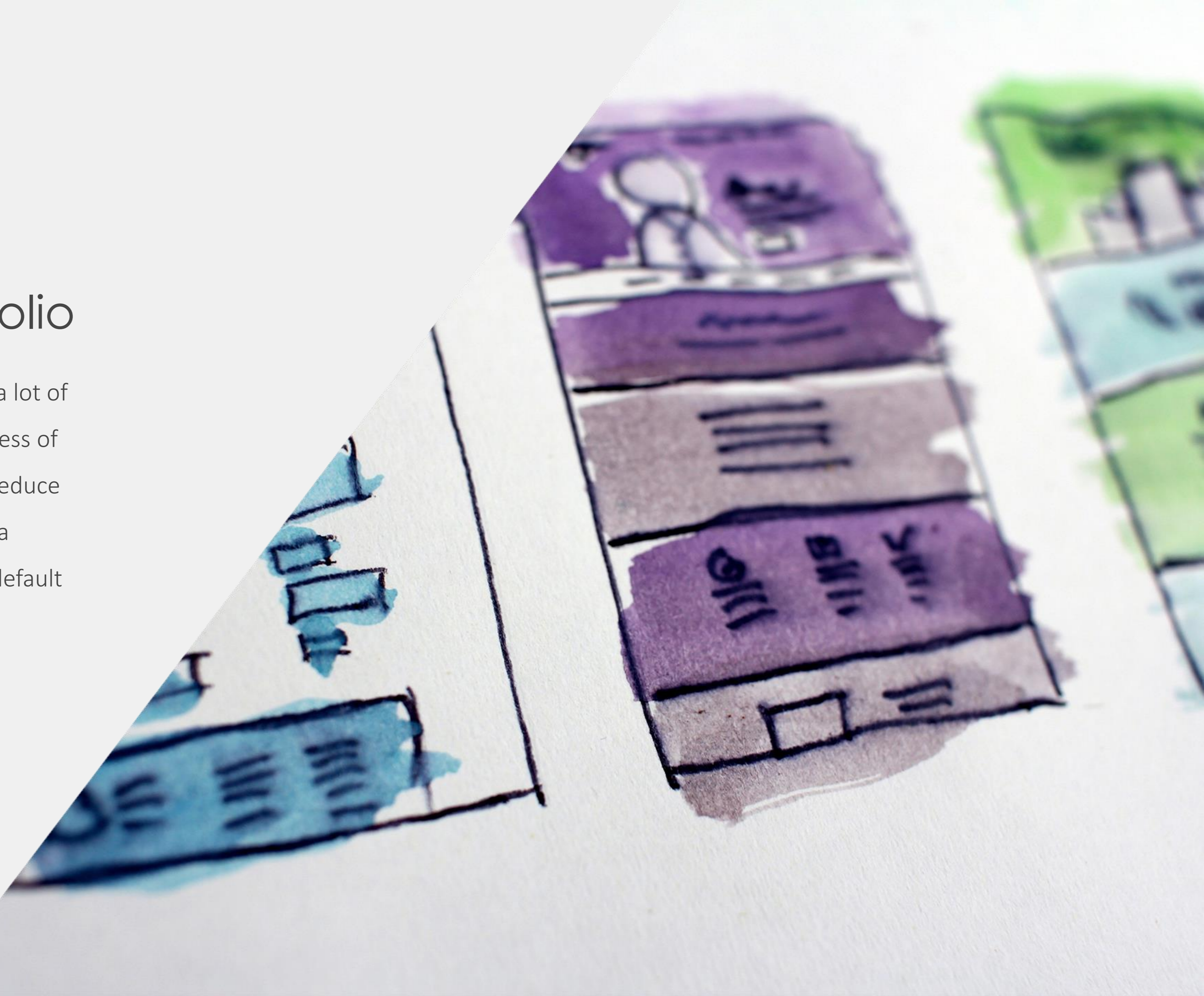
A user can extend the framework, usually by selective overriding; or programmers can add specialized user code to provide specific functionality.

# Framework Advantages



# Template Portfolio

Designing is a job that requires a lot of creativity and originality regardless of the domain it is applied on. To reduce time to market, it useful create a collection of templates, with a default business logic.





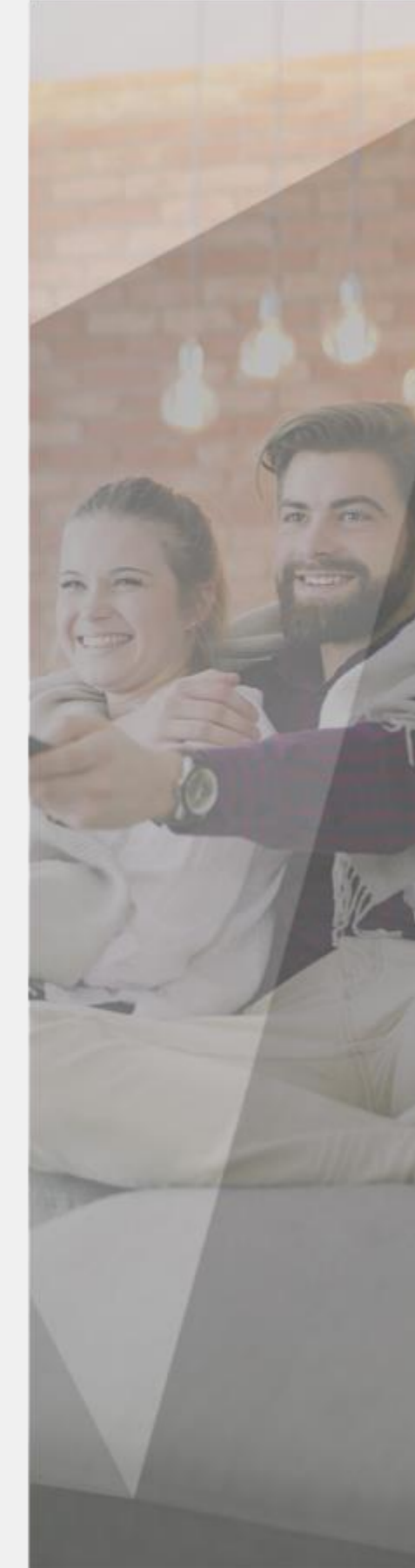
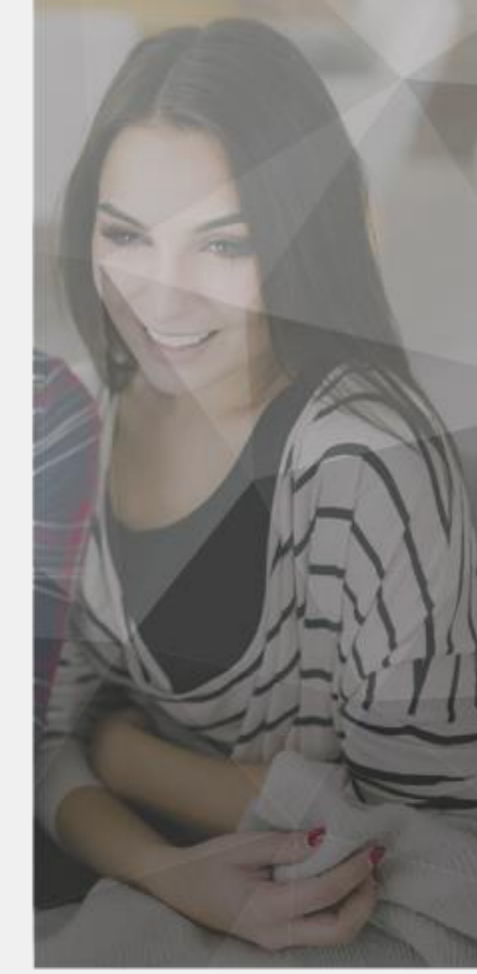
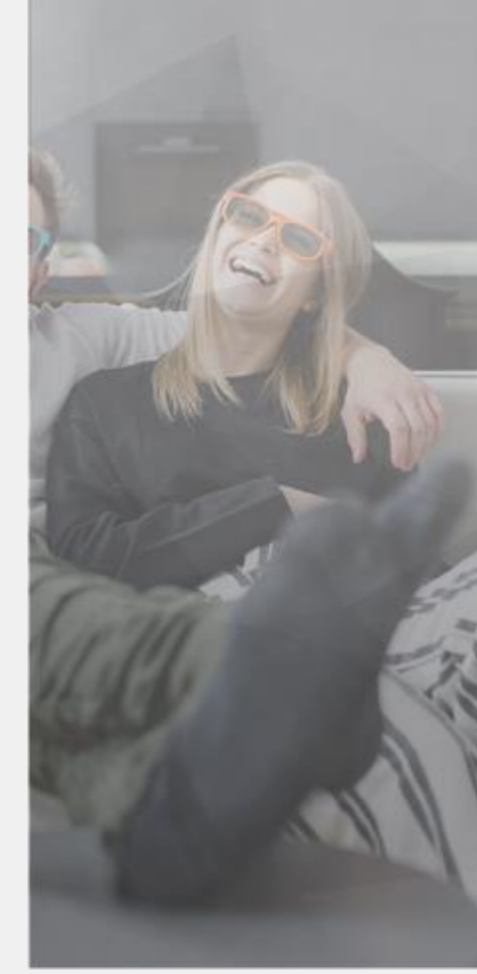


Thanks for your attention

## Conclusions

The **Frameworks** and **Templates** approach allows you to:

- Reduce the time to market
- Reduce the defectiveness
- Reduce the learning time





# KINETON



*media@kineton.it*



Via E. Gianturco 23, 80146 – Naples, Italy



*+ 39 081 18639910*



*08585821211*

